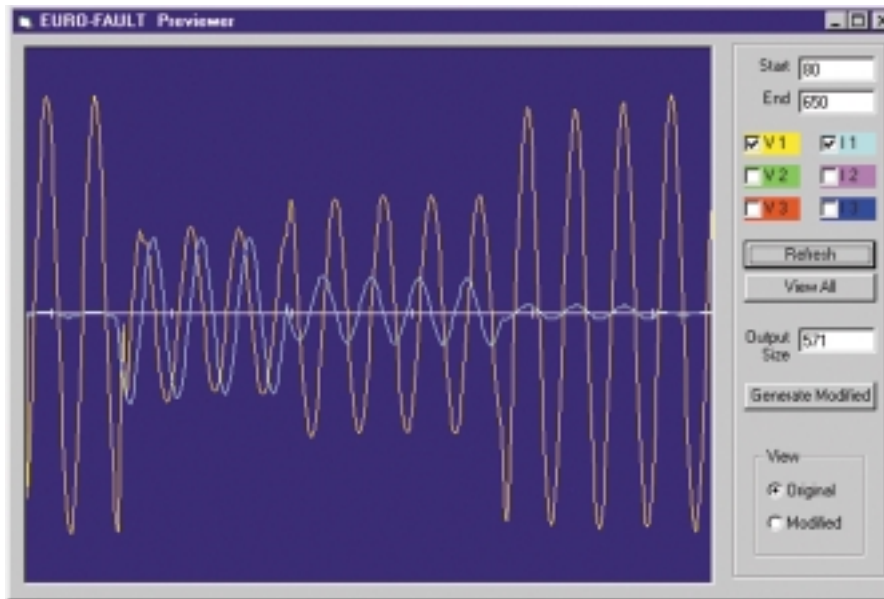


EUROFAULT SOFTWARE

*Capture and play-back software
for COMTRADE files*



APPLICATION

- Playback of previously registered faults and transients, or calculated by EMTP programs.
- Enables to analyze the behavior of a protection relay or system against the above mentioned.

MAIN FEATURES

- Windows based.
- Extremely easy to edit in terms of adding pre-fault cycles, adding the cycles, etc.
- Compatible with any combination of the PTE Range equipment (except PTE-100-C).

DESCRIPTION

EUROFAULT software has been designed for capturing and playing-back any COMTRADE files of faults either simulated or calculated. EUROFAULT software plays back the COMTRADE files, so that the test set plays back the fault exactly as it occurred.

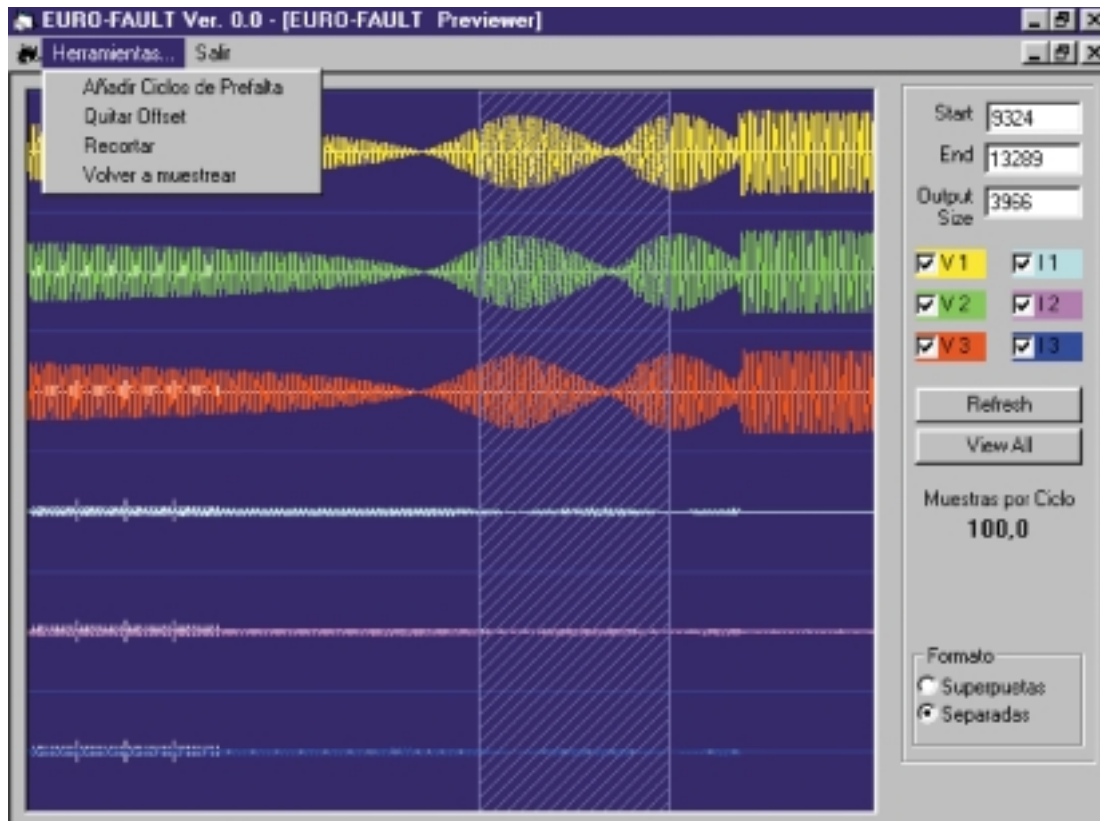
WINDOWS Based, the software along with many other features is very user-friendly. The operator does not need to do any additional work for retrieving the COMTRADE file, as the EUROFAULT has the tools for obtaining the COMTRADE file from both a graphical and numerical standpoint.

Other available features of the EUROFAULT software is the capability of editing the pre-fault and post fault duration along with the desired voltages and/or current channels.

Furthermore, enables interpolation of the waveform to a greater number of samples that smooth the waveform closer to reality. An elimination of non-relevant cycles can be made too so that we only play back what caused the relay to trip or block, etc.

The maximum number of cycles which can be played back is up to 32 Kb per channel which equals 800 cycles per channel at a sampling rate of 40 samples per cycle or 1600 cycles per channel at a sampling rate of 20 samples per cycle.

Attached are some screens of EUROFAULT software. The screens related to the edition of COMTRADE FILES correspond to a power swing detected on a HV transmission line.



PREVIEWER SCREEN IN EUROFAULT SOFTWARE.

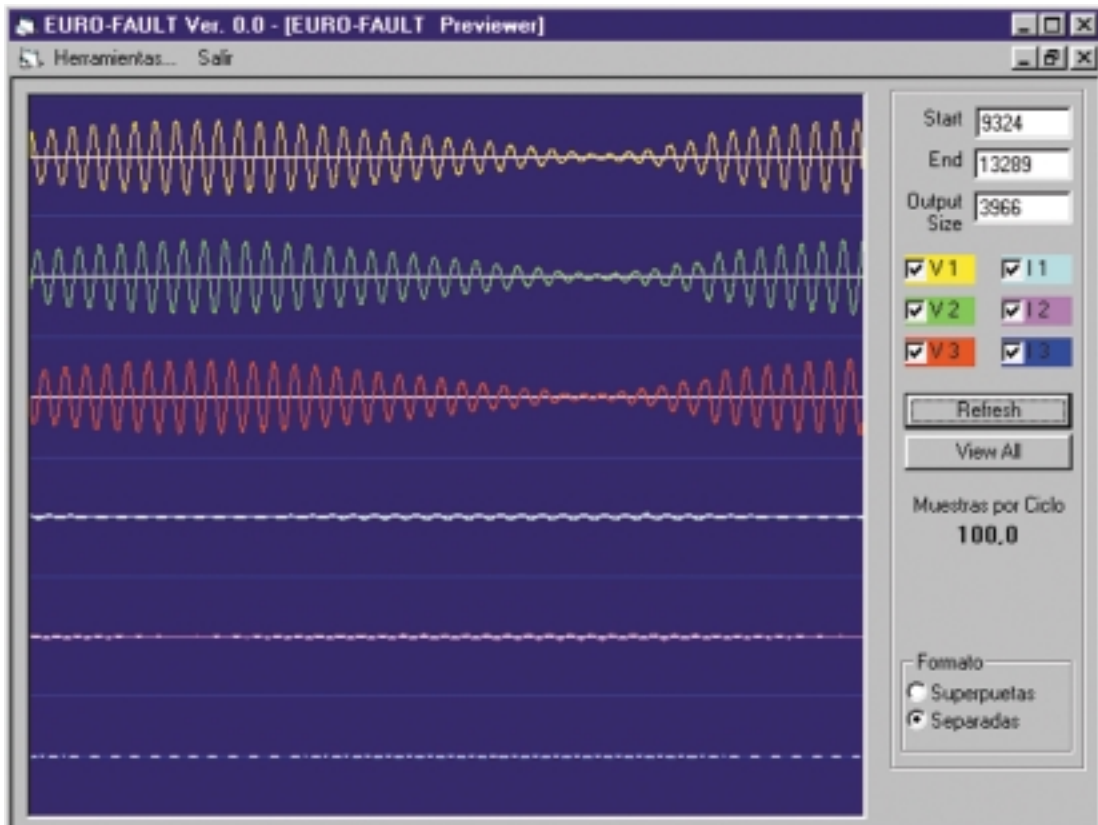
Three currents and three voltages can be edited, either separately or superimposed.

Certain zones can be enlarged for a deeper study and other functions are provided such as:

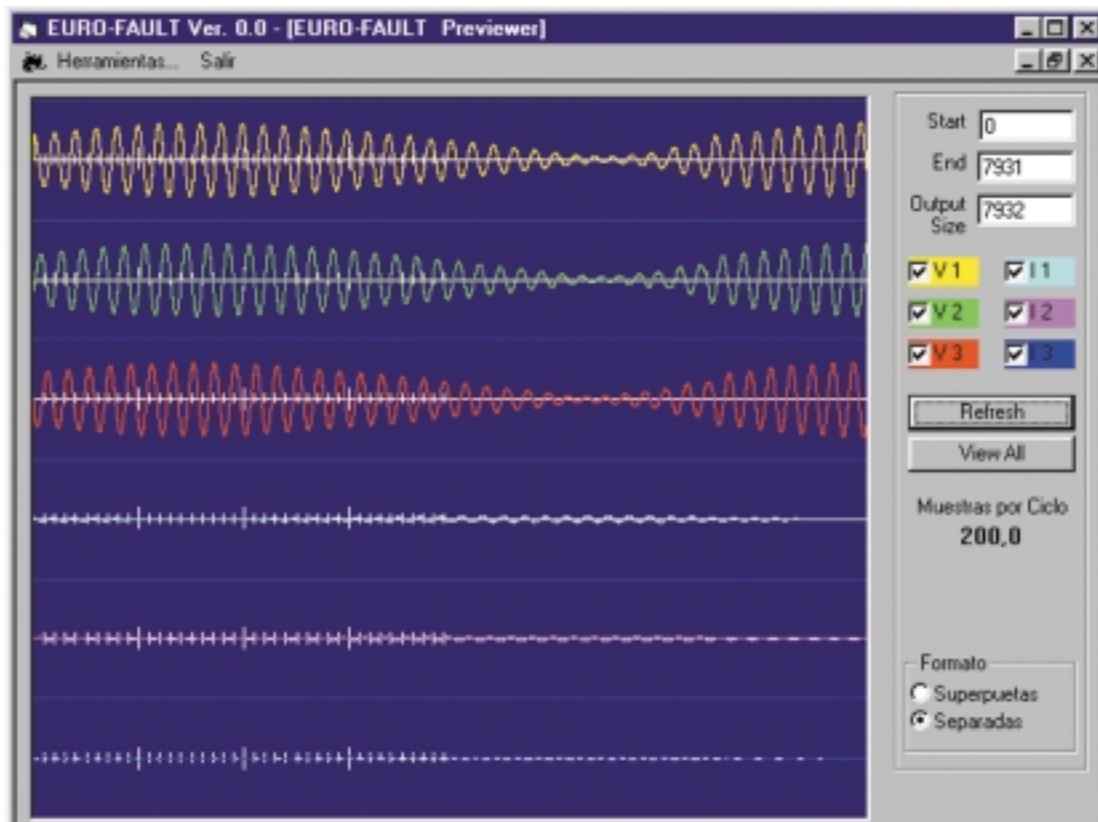
- Adding pre-fault cycles.
- Removing DC offset.
- Cutting unwanted cycles.
- Resampling.

The section between the samples 9324 and 13289 have been enlarged.

A continuation cut the COMTRADE file has been cut to show only the samples between 9324 and 13289 and the sampling rate has been doubled to 200 samples per cycle.



PREVIOUS ZOOMED SCREEN



CUTTING COMTRADE FILE AND INCREASING SAMPLING RATE



CONTROL PANEL

Connecting the software to the equipment we can play back the COMTRADE file with the desired modifications.

We only need to enter the current and voltage transformers ratios so that we proceed with the secondary injection through the equipment.

EUROSMC, S.A.

Poligono Industrial P-29, Calle Buril, 69.
 28400 Collado-Villalba. Madrid (Spain).
 Tels: 34 - 91 - 849 89 80*. Fax: 34 - 91 - 851 25 53
 www.eurosmc.com • e-mail: sales@eurosmc.com

DISTRIBUTED BY: